



# INDUSTRIAL TIRE

STABILITY

ENDURANCE

CHALLENGE



## EX AI42

## IND4

Wide, big and robust tread pattern, excellent elastic carcass provide remarkable traction, stability and handling safety.

### Features:

- Compared with normal constructure, reinforcing material with higher strength(increased by over 40%) were used, ensure excellent safety under the condition of high pressure and high load. Optimized contact footprint reduce effectively the stress of the crown.
- Special technological design is adopted in shoulder to meet the requirements of frequent or in-situ turning under heavy load.
- Wide and big square block, excellent tread compound, provide optimized wear resistance and longer service life



SIZE	PATTERN	TRA	TYPE	RIM	STAR RATING	O.D.	S.W.	T.D.	Inflation		L.C.C.		L.I.S
									Load Wheel	Steering Wheel	Load Wheel	Steering Wheel	
									KPa	KPa	kg	KPa	
18.00R25	EX AI42	IND4	TL	13.00/2.5	★★★	1648	486	65	1000	1000	21850	17500	207A5

# INDUSTRIAL TIRE



STABILITY | ENDURANCE | CHALLENGE



## EX AI41

## IND4

Wide, big and robust tread pattern, excellent elastic carcass provide remarkable traction, stability and handling safety.

### Features:

- Compared with normal constructure, reinforcing material with higher strength(increased by over 40%) were used, ensure excellent safety under the condition of high pressure and high load. Optimized contact footprint reduce effectively the stress of the crown.
- Special technological design is adopted in shoulder to meet the requirements of frequent or in-situ turning under heavy load.
- Wide and big square block, excellent tread compound, provide optimized wear resistance and longer service life



SIZE	PATTERN	TRA	TYPE	RIM	STAR RATING	O.D.	S.W.	T.D.	Inflation		L.C.C.		L.I.S
									Load Wheel	Steering Wheel	Load Wheel	Steering Wheel	
									KPa	KPa	kg	KPa	
12.00R20	EX AI41	IND4	TT/TL	8.5X20	★★	1120	305	40	1000	1000	9230	7100	176A5
12.00R24	EX AI41	IND4	TL	8.5	★★★	1222	305	40	1000	1000	9750	7500	178A5
12.00R24	EX AI41+	IND4	TL	8.5	★★★	1250	305	52	1000	1000	9750	7500	178A5
14.00R24	EX AI41	IND4	TL	10.00W	★★★	1404	386	63	1000	1000	11500	10000	193A5
16.00R25	EX AI41	IND4	TL	11.25/2.0	★★	1510	420	71	1000	1000	14000	14000	200A5
18.00R25	EX AI41	IND4	TL	13.00/2.5	★★★	1648	486	65	1000	1000	21850	17500	207A5
18.00R33	EX AI41	IND4	TL	13.00/2.5	★★★	1828	475	70	1000	1000	26500	21200	219A5

# INDUSTRIAL TIRE

STABILITY

ENDURANCE

CHALLENGE





## EX AI32

## IND3

Combined wide and big square block with groove, excellent elastic carcass provide remarkable traction, stability and handling safety for tire used on straddle carrier

**Features:**

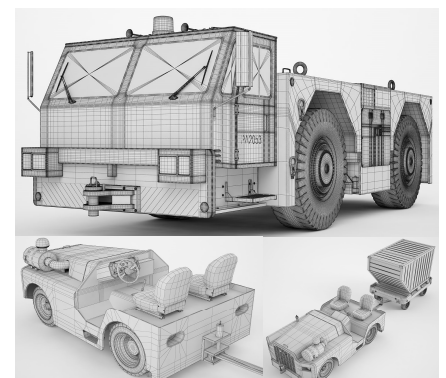
- Unique crown and reinforced sidewall ensure resistance to cutting and scratch
- Dual tread (Cap/base) effectively reduce heat generation and improve tread wear and longer service life.



SIZE	PATTERN	TRA	TYPE	RIM	STAR RATING	O.D. mm	S.W. mm	T.D. mm	Inflation		L.C.C.		L.I.S
									Load Wheel	Steering Wheel	Load Wheel	Steering Wheel	
									KPa	KPa	kg	KPa	
12.00R20	EX AI32	IND3	TT/TL	8.5X20	★★	1120	305	34	1000	1000	9230	7100	176A5
480/95R25	EX AI32	IND3	TL	13.00/2.5	★★★	1540	450	50	1000	1000	15725	15725	206A7

# INDUSTRIAL TIRE

STABILITY    ENDURANCE    CHALLENGE





## EX AI31

## IND3/IND4

Combined wide and big square block with groove, excellent elastic carcass provide remarkable traction, stability and handling safety for tire used on straddle carrier

**Features:**

- Unique crown and reinforced sidewall ensure resistance to cutting and scratch
- Dual tread (Cap/base) effectively reduce heat generation and improve tread wear and longer service life.



SIZE	PATTERN	TRA	TYPE	RIM	STAR RATING	O.D. mm	S.W. mm	T.D. mm	Inflation		L.C.C.		L.I.S
									Load Wheel	Steering Wheel	Load Wheel	Steering Wheel	
									KPa	KPa	kg	KPa	
16.00R25	EX AI31	IND3	TL	11.25/2.0	★★	1495	420	51	1000	1000	14000	14000	200A5
16.00R25	EX AI31	IND4	TL	11.25/2.0	★★★	1495	420	51	1000	1000	16000	16000	204A5
450/95R25	EX AI31	IND3	TL	11.25/2.0	★★	1495	420	51	1000	1000	14000	14000	200A5
450/95R25	EX AI31	IND4	TL	11.25/2.0	★★★	1495	420	51	1000	1000	16000	16000	204A5

# INDUSTRIAL TIRE

STABILITY

ENDURANCE

CHALLENGE





## C601

### Industrial

Designed for use in multiple applications, C601 offers excellent traction and protection from punctures, as well as improved stability

#### Features:

- Extra wide profile and reinforced sidewall for improved stability
- Thick undertread for maximum puncture resistance
- Self-cleaning industrial tread design provides excellent traction
- Cut and wear resistant compound



SIZE	PATTERN	TYPE	RIM	O.D.	S.W.	T.D.	Inflation	L.C.C.
				mm	mm	mm	KPa	kg
18X7-8	C601	TT	4.33R	465	173	17	1000	1695/1450
21X8-9	C601	TT	6.00E	535	200	16	1000	2040/1725
23X9-10	C601	TT	6.50F	595	225	20	1030	2810/2370
23X10-12	C601	TT	8.00G	597	254	20	970	3220/2720
23X10-12	C601	TT	8.00G	597	254	20	790	3160
27X10-12	C601	TT	8.00G	690	255	23	1000	3770
4.00-8	C601	TT	3.00D	415	112	13	930	745/630
5.00-8	C601	TT	3.50D	470	137	14	1000	1150/970
6.00-9	C601	TT	4.00E	540	160	16	860	1505/1275
6.50-10	C601	TT	5.00F	590	175	18	1000	1895/1600
7.00-12	C601	TT	5.00S	676	190	18	860	2375/2005
7.00-12	C601	TT	5.00S	676	190	18	1000	2590/2190
250-15	C601	TT	7.50BD	735	250	20	1000	5000
28X9-15	C601	TT	7.00BD	706	220	19	970	3050/2575

# INDUSTRIAL TIRE

STABILITY

ENDURANCE

CHALLENGE





## C601

### Industrial

Designed for use in multiple applications, C601 offers excellent traction and protection from punctures, as well as improved stability

**Features:**

- Extra wide profile and reinforced sidewall for improved stability
- Thick undertread for maximum puncture resistance
- Self-cleaning industrial tread design provides excellent traction
- Cut and wear resistant compound



SIZE	PATTERN	TYPE	RIM	O.D.	S.W.	T.D.	Inflation	L.C.C.
				mm	mm	mm	KPa	kg
7.00-15	C601	TT	5.5	750	200	20	860	2870/2420
7.00-15	C601	TT	5.5	750	200	20	1000	3140/2655
7.50-15	C601	TT	6.00G	780	215	20	790	3075/2680
7.50-16	C601	TT	6.00G	805	215	20	950	3225
8.25-15	C601	TT	6.50BD	840	235	20	830	3775/3185
300-15	C601	TT	8.00BD	840	300	24	930	6575/5790
9.00-20	C601	TT	7	1018	259	30	760	5195/4385
9.00-20	C601	TT	7	1018	259	30	860	5595/4725
10.00-20	C601	TT	7.5	1055	278	34	790	6030/5090
11.00-20	C601	TT	8	1085	293	36	760	6405/5405
12.00-20	C601	TT	8.5	1125	315	38	1000	7400/6325
12.00-24	C601	TT	8.5	1225	315	38	1000	6140
14.00-24	C601	TT	10	1343	375	38	1000	12850

# INDUSTRIAL TIRE

STABILITY

ENDURANCE

CHALLENGE





## SOLID STAR I **SOLID**

Premium 3-stage solid resilient tire designed for industrial and port applications.

### Features:

- Premium natural rubber compounds:
- - Cut and tear resistant tread
- - Soft, heat resistant cushion center
- Premium 3-stage compound construction:
- - Evenly layered compound uniformity
- - Internal steel ring reinforcement eliminates wheel slip
- Wide footprint for maximum lifting stability
- Full tread profile for uniform load distribution



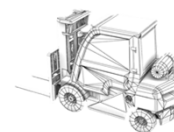
SIZE	PATTERN	RIM	O.D.	S.W.	T.D.	Loading Capacity(kg)						Other Industrial Equipment (kg)
						Counter Balance Lift Equipment		16km/h		25km/h		
						10km/h	10km/h	Driving	Steering	Driving	Steering	Driving
16.00-25	SOLID STAR	11.25/2.0	1446	390	127	16860	13490	15170	11400	13480	10130	12130
17.5-25	SOLID STAR	14	1356	458	155	17720	14180	16880	12690	15960	12000	12220
18.00-25	SOLID STAR	13.00/2.5	1607	480	145	21200	16960	20480	15400	19100	14360	14620
23.5-25	SOLID STAR	19.5	1607	580	218	30830	24660	29790	22400	27770	20880	21260
26.5-25	SOLID STAR	22.00/3.0	1736	650	241	39300	31400	37400	28100	35400	26600	27100

# INDUSTRIAL TIRE

STABILITY

ENDURANCE

CHALLENGE







## SOLID STAR II **SOLID**

Premium 3-stage solid resilient tire designed for industrial and port applications.

Both Aperture sidewall and Non-Aperture sidewall design are available.

### Features:

- Premium natural rubber compounds:
  - - Cut and tear resistant tread
  - - Soft, heat resistant cushion center
- Premium 3-stage compound construction:
  - - Evenly layered compound uniformity
  - - Internal steel ring reinforcement eliminates wheel slip
- Wide footprint for maximum lifting stability
- Full tread profile for uniform load distribution



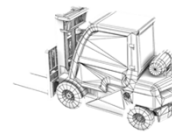
SIZE	PATTERN	RIM			O.D. mm	S.W. mm	Surface Width mm	Loading Capacity kg
		Size	STD	SWIFT				
12.00-24	SOLID STAR II	8.50	√		1220	307	296	6450
13.00-24	SOLID STAR II	8.50			1270	320	305	7550
14.00-24	SOLID STAR II	10.00	√		1320	353	324	8595
17.5-25	SOLID STAR II	14.00	√		1335	440	410	8250
17.5-25 Small	SOLID STAR II	14.00	√		1300	420	410	8250
16.00-25	SOLID STAR II	11.3	√		1446	415	395	13600
20.5-25	SOLID STAR II	17.00	√		1490	520	495	11500
23.5-25 Aperture	SOLID STAR II	19.50	√		1530	590	530	13600
23.5-25 Non-Aperture	SOLID STAR II	19.50	√		1548	600	535	13600
26.5-25	SOLID STAR II	22.00			1740	650	620	17000
29.5-25	SOLID STAR II	25.00			1860	750	695	20950
35/65-33	SOLID STAR II	28.00			2050	880	830	23600
1020-310-24	SOLID STAR II	8.50	√		996	295	289	7500

# INDUSTRIAL TIRE

STABILITY

ENDURANCE

CHALLENGE



## SOLID SKS

**SOLID**



Premium 3 stage solid resilient tire optimized for durability and performance. Designed with a durable tread compound to supply 15% more wear resistance. Improved center compound delivers more heat resistance. Enhanced mixing and building process ensures optimum performance in the working environment. Guided, large pattern design, aperture sidewall;

### Features:

- Premium natural rubber compounds
- Wide footprint for maximum lifting stability
- Cut and wear resistant compound
- Full tread profile for uniform load distribution
- Deep tread configuration for superior traction
- Available in both Standard, and Swift(Clip/Halo/LOC) bead set configuration



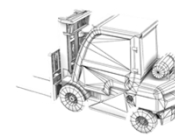
SIZE	PATTERN	RIM			O.D. mm	S.W. mm	Surface Width mm	Loading Capacity kg
		Size	STD	SWIFT				
10-16.5(30x10-16)Dual-Aperture	SOLID SKS	6.00	√		738	220	217	3900
10-16.5(30x10-16)Tri-Aperture	SOLID SKS	6.00	√		785	246	235	3900
12-16.5(33x12-20)	SOLID SKS	7.50	√		820	275	267	4400
31x10-20	SOLID SKS	7.50	√		775	246	235	3700
33x10-20	SOLID SKS	7.00	√		820	270	267	7075
36.5x14-20	SOLID SKS	11.00	√		915	333	297	4000
385/65-24	SOLID SKS	10.00	√		1043	386	368	6650
40x14-24	SOLID SKS	8.50			975	355	345	5890
16/70-20	SOLID SKS	13.00	√		1043	386	368	6300
16/70-24	SOLID SKS	13.00	√	√	1043	386	368	6400
20.5/70-16	SOLID SKS	9.50	√	√	878	292	270	4845
830x200-20	SOLID SKS	6.50	√	√	812	197	183	3900
850x250-20	SOLID SKS	6.50	√	√	830	236	231	4400
1020-310-24	SOLID SKS	8.50	√	√	996	295	416	
46x15x36 Band	SOLID SKS	-	√		1167	456	289	7075
10x40.5(10.00-20)	SOLID SKS	7.50	√		1039	260	242	7500

## INDUSTRIAL TIRE

STABILITY

ENDURANCE

CHALLENGE





## B101

## SOLID

Premium 3 stage solid resilient tire optimized for durability and performance. Designed with a durable tread compound to supply 15% more wear resistance. Improved center compound delivers more heat resistance. Enhanced mixing and building process ensures optimum performance in the working environment. Low Rolling Resistance with fuel efficiency, widely used in forklifts and other industrial vehicles

### Features:

- Premium natural rubber compounds
- Wide footprint for maximum lifting stability
- Cut and wear resistant compound
- Full tread profile for uniform load distribution
- Deep tread configuration for superior traction
- Available in both Standard, and Swift(Clip/Halo/LOC) bead set configuration



SIZE	PATTERN	RIM			O.D.	S.W.	Surface Width	Loading Capacity(kg) Counter Balance Lift Equipment						Loading Capacity(kg) Other Industrial Equipment			
		Size	STD	SWIFT				10km/h		16km/h		25km/h		Static	6km/h	10km/h	25km/h
								Driving	Steering	Driving	Steering	Driving	Steering				
6.00-9	B101	4.00	✓		504	137	133	1975	1520	1805	1390	1675	1290	2065	1675	1520	1290
6.50-10	B101	5.00	✓		550	158	150	2715	2090	2485	1910	2310	1775	2840	2310	2095	1775
7.00-12	B101	5.00	✓		630	164	159	3105	2390	2835	2180	2635	2025	3240	2635	2390	2025
28x9-15	B101	7.00	✓		683	224	200	4060	3125	3710	2855	3445	2650	4240	3445	3125	2650
8.25-15	B101	6.50	✓		775	218	196	4305	3310	3925	3020	3540	2800	4480	3640	3305	2800
300-15	B101	8.00	✓		802	249	226	6895	5305	6300	4845	5850	4500	7200	5850	5310	4500

Wear-resistant Crown  
Improve Tire Life

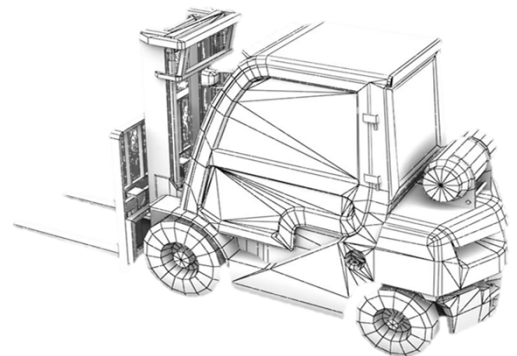
Elastic Buffer Zone  
Improve Comfort

Strong Base  
Reduce unseating



Anc Sidewall  
Better buffering

Steel Reinforced Band  
Improve stability





## B102

**SOLID**

Premium 3 stage solid resilient tire optimized for durability and performance. Designed with a durable tread compound to supply 15% more wear resistance. Improved center compound delivers more heat resistance. Enhanced mixing and building process ensures optimum performance in the working environment. Suitable for general forklift rental, Port Terminal low-speed vehicles

### Features:

- Premium natural rubber compounds
- Wide footprint for maximum lifting stability
- Cut and wear resistant compound
- Full tread profile for uniform load distribution
- Deep tread configuration for superior traction
- Available in both Standard, and Swift(Clip/Halo/LOC) bead set configuration



SIZE	PATTERN	RIM			O.D.	S.W.	Surface Width	Loading Capacity(kg)						Loading Capacity(kg)			
		Size	STD	SWIFT				Counter Balance Lift Equipment						Other Industrial Equipment			
								10km/h		16km/h		25km/h		Static		6km/h	
Driving	Steering	Driving	Steering	Driving	Steering	Static	6km/h	10km/h	25km/h	Static	6km/h	10km/h	25km/h				
4.00-8	B102	3.00	√	√	392	113	104	1090	840	995	765	925	710	1135	925	840	710
15x4 1/2-8	B102	3.00	√	√	365	113	105	1005	775	915	705	850	655	1050	850	775	655
5.00-8	B102	3.0/3.5	√	√	446	115	110	1255	965	1145	880	1060	815	1305	1060	960	815
16x6-8	B102	4.33	√	√	391	143	135	1545	1190	1410	1085	1305	1005	1610	1305	1185	1005
18x7-8	B102	4.33	√	√	440	154	141	2430	1870	2215	1705	2060	1585	2535	2060	1870	1585
6.00-9	B102	4.00	√	√	517	137	123	1975	1520	1805	1390	1675	1290	2065	1675	1520	1290
7.00-9	B102	5.00	√	√	545	158	137	2670	2055	2440	1875	2260	1740	2785	2260	2055	1740
21x8-9	B102	6.00	√	√	501	186	169	2890	2225	2645	2035	2455	1890	3025	2455	2230	1890
6.50-10	B102	5.00	√	√	568	161	150	2715	2090	2485	1910	2310	1775	2840	2310	2095	1775
23x9-10	B102	6.20	√	√	563	195	182	3730	2870	3405	2620	3160	2430	3890	3160	2865	2430
200/50-10	B102	6.20	√	√	450	191	166	2910	2240	2665	2050	2470	1900	3040	2470	2240	1900
7.00-12	B102	5.00	√	√	641	164	147	3105	2390	2835	2180	2635	2025	3240	2635	2390	2025
8.25-12	B102	5.00	√	√	705	190	170	3425	2635	3125	2405	2905	2235	3575	2905	2635	2235
23x10-12	B102	8.00	√	√	586	240	224	4450	3425	4060	3125	3770	2900	4640	3779	3420	2900
27x10-12	B102	8.00	√	√	642	240	221	4595	3535	4200	3230	3900	3000	4800	3900	3540	3000

Wear-resistant Crown  
Improve Tire Life

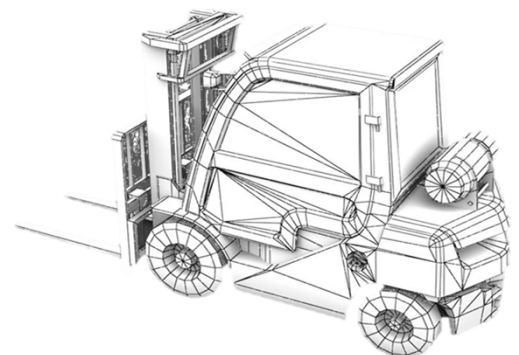
Elastic Buffer Zone  
Improve Comfort

Strong Base  
Reduce unseating



Anc Sidewall  
Better buffering

Steel Reinforced Band  
Improve stability



## B102

## SOLID



Premium 3 stage solid resilient tire optimized for durability and performance. Designed with a durable tread compound to supply 15% more wear resistance. Improved center compound delivers more heat resistance. Enhanced mixing and building process ensures optimum performance in the working environment. Suitable for general forklift rental, Port Terminal low-speed vehicles

### Features:

- Premium natural rubber compounds
- Wide footprint for maximum lifting stability
- Cut and wear resistant compound
- Full tread profile for uniform load distribution
- Deep tread configuration for superior traction
- Available in both Standard, and Swift(Clip/Halo/LOC) bead set configuration



SIZE	PATTERN	RIM			O.D.	S.W.	Surface Width	Loading Capacity(kg)						Loading Capacity(kg)			
		Size	STD	SWIFT				Counter Balance Lift Equipment						Other Industrial Equipment			
								10km/h		16km/h		25km/h		Static	6km/h	10km/h	25km/h
Driving	Steering	Driving	Steering	Driving	Steering	Static	6km/h	10km/h	25km/h								
7.00-15	B102	5.50	√		714	184	162	3700	2845	3375	2595	3135	2410	3855	3135	2845	2410
7.50-15	B102	6.50	√		766	198	177	4490	3455	4100	3155	3810	2930	4690	3810	3455	2930
28x9-15	B102	7.00	√	√	685	227	200	4060	3125	3710	2855	3445	2650	4240	3445	3125	2650
8.25-15	B102	6.50	√	√	789	214	198	4305	3310	3925	3020	3540	2800	4480	3640	3305	2800
250-15	B102	7.0/7.5	√	√	695	225	210	5220	4015	4770	3670	4425	3405	5450	4425	4015	3405
300-15	B102	8.00	√	√	802	249	226	6895	5305	6300	4845	5850	4500	7200	5850	5310	4500
28x12.5-15	B102	9.75	√	√	680	281	265	6200	4470	5660	4355	5260	4045	6470	5260	4775	4045
32x12.1-15	B102	9.75			795	295	280	-	-	-	-	7085	5450	8720	7085	6430	5450
7.50-16	B102	5.50	√		769	198	177	4035	3105	3685	2835	3425	2635	4215	3425	3110	2635
8.00-16	B102	5.50	√		777	201	180	4070	3130	3720	2860	3450	2655	4250	3450	3135	2655
9.00-16	B102	6.00	√		825	217	205	4480	3445	4090	3145	3795	2920	4670	3795	3445	2920
8.25-20	B102	6.50	√		937	219	198	5335	4445	4870	4060	4525	3770	5655	4900	4110	3770
9.00-20	B102	7.00	√		987	236	218	6365	5305	5815	4845	5400	4500	6750	5850	4905	4500
10.00-20	B102	8.00	√		1015	258	238	7300	6085	6670	5560	6200	5165	7750	6715	5630	5165
11.00-20	B102	8.00	√		1034	271	256	7715	6430	7045	5870	6540	5450	8175	7085	5940	5450
12.00-20	B102	8.50	√		1081	304	275	9190	7660	8390	6990	7795	6495	9745	8445	7080	6495

Wear-resistant Crown  
Improve Tire Life

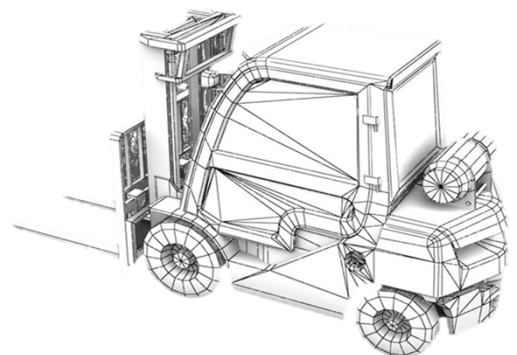
Elastic Buffer Zone  
Improve Comfort

Strong Base  
Reduce unseating



Anc Sidewall  
Better buffering

Steel Reinforced Band  
Improve stability



## B103

## SOLID



Premium 3 stage solid resilient tire optimized for durability and performance. Designed with a durable tread compound to supply 15% more wear resistance. Improved center compound delivers more heat resistance. Enhanced mixing and building process ensures optimum performance in the working environment. Suitable for ceramic factory, brewery, paper mill and other harsh environment.

### Features:

- Premium natural rubber compounds
- Wide footprint for maximum lifting stability
- Cut and wear resistant compound
- Full tread profile for uniform load distribution
- Deep tread configuration for superior traction
- Available in both Standard, and Swift(Clip/Halo/LOC) bead set configuration



SIZE	PATTERN	RIM			O.D.	S.W.	Surface Width	Loading Capacity(kg)						Loading Capacity(kg)			
								Counter Balance Lift Equipment						Other Industrial Equipment			
		Size	STD	SWIFT				10km/h		16km/h		25km/h		Static	6km/h	10km/h	25km/h
mm	mm	mm	Driving	Steering	Driving	Steering	Driving	Steering									
15x4 1/2-8	B103	3.00	√	√	375	116	110	1005	775	915	705	850	655	1050	850	775	655
5.00-8	B103	3.25	√	√	457	125	118	1255	965	1145	880	1060	815	1305	1060	960	815
16x6-8	B103	4.33	√	√	406	148	140	1545	1190	1410	1085	1305	1005	1610	1305	1185	1005
18x7-8	B103	4.33	√	√	447	153	147	2430	1870	2215	1705	2060	1585	2535	2060	1870	1585
18x7-8 W	B103	4.33	√	√	455	175	163	2430	1870	2215	1705	2060	1585	2535	2060	1870	1585
140/55-9	B103	4.00	√	√	375	120	114	1380	1060	1260	970	1170	900	1440	1170	1060	900
6.00-9	B103	4.00	√	√	520	145	140	1975	1520	1805	1390	1675	1290	2065	1675	1520	1290
7.00-9	B103	5.00	√	√	565	170	155	2670	2055	2440	1875	2260	1740	2785	2260	2055	1740
21x8-9	B103	6.00	√	√	517	190	182	2890	2225	2645	2035	2455	1890	3025	2455	2230	1890
6.50-10	B103	5.00	√	√	564	163	152	2715	2090	2485	1910	2310	1775	2840	2310	2095	1775
23x9-10	B103	6.50	√	√	583	198	185	3730	2870	3405	2620	3160	2430	3890	3160	2865	2430
200/50-10	B103	6.50	√	√	454	190	178	2910	2240	2665	2050	2470	1900	3040	2470	2240	1900
7.00-12	B103	5.00	√	√	636	167	156	3105	2390	2835	2180	2635	2025	3240	2635	2390	2025
23x10-12	B103	8.00	√	√	576	242	232	4450	3425	4060	3125	3770	2900	4640	3779	3420	2900
27x10-12	B103	8.00	√	√	668	240	231	4595	3535	4200	3230	3900	3000	4800	3900	3540	3000
28x9-15	B103	7.00	√	√	690	215	205	4060	3125	3710	2855	3445	2650	4240	3445	3125	2650
8.25-15	B103	6.50	√	√	787	206	195	4305	3310	3925	3020	3540	2800	4480	3640	3305	2800
250-15	B103	7.50	√	√	720	233	218	5220	4015	4770	3670	4425	3405	5450	4425	4015	3405
300-15	B103	8.00	√	√	805	265	245	6895	5305	6300	4845	5850	4500	7200	5850	5310	4500
28x12.5-15	B103	9.75	√	√	695	305	297	6200	4770	5660	4355	5260	4045	6470	5260	4775	4045
32x12.1-12	B103	9.75			795	295	280	-	-	-	-	7085	5450	8720	7085	6430	5450
355/65-15	B103	9.75	√	√	805	302	292	-	-	-	-	7800	6000	-	-	6430	5450

Wear-resistant Crown  
Improve Tire Life

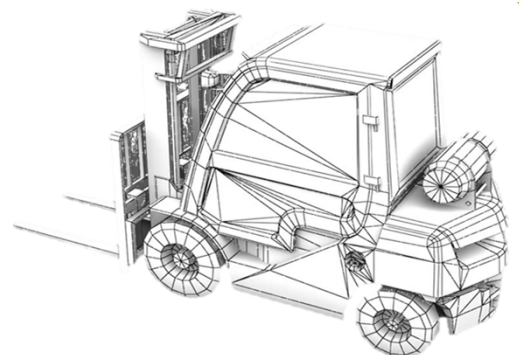
Elastic Buffer Zone  
Improve Comfort

Strong Base  
Reduce unseating



Anc Sidewall  
Better buffering

Steel Reinforced Band  
Improve stability



## B104

## SOLID



Premium 3 stage solid resilient tire optimized for durability and performance. Designed with a durable tread compound to supply 15% more wear resistance. Improved center compound delivers more heat resistance. Enhanced mixing and building process ensures optimum performance in the working environment. Designed for Scrap metal sites, or high-load sites, ultra-wide tread and increased pattern situation, offering more wear resistance

### Features:

- Premium natural rubber compounds
- Wide footprint for maximum lifting stability
- Cut and wear resistant compound
- Full tread profile for uniform load distribution
- Deep tread configuration for superior traction
- Available in both Standard, and Swift(Clip/Halo/LOC) bead set configuration



SIZE	PATTERN	RIM			O.D. mm	S.W. mm	Surface Width mm	Loading Capacity(kg) Counter Balance Lift Equipment				Loading Capacity(kg) Other Industrial Equipment
		Size	STD	SWIFT				10km/h		25km/h		Static
								Driving	Steering	Driving	Steering	
5.00-8	B104	3.25	✓	✓	447	117	114	1255	955	1080	815	1305
18x7-8	B104	4.33	✓	✓	412	153	147	2430	1870	2060	1585	2535
6.00-9	B104	4.00	✓	✓	512	140	135	1975	1520	1675	1290	2065
6.50-10	B104	5.00	✓	✓	557	163	153	2715	2090	2310	1775	2840
7.00-12	B104	5.00	✓	✓	635	166	152	3105	2390	2635	2025	3240
28x9-15	B104	7.00	✓	✓	690	224	218	4060	3125	3445	2550	4240
8.25-15	B104	6.50	✓	✓	777	203	194	4550	4100	3900	3400	5510
300-15	B104	8.00	✓	✓	796	247	237	8895	5305	5850	4500	7200
650-16	B104	5.5F			470	170	162					

Wear-resistant Crown  
Improve Tire Life

Elastic Buffer Zone  
Improve Comfort

Strong Base  
Reduce unseating



Anc Sidewall  
Better buffering

Steel Reinforced Band  
Improve stability

